

## Accommodation Details

### <Location & transportation>

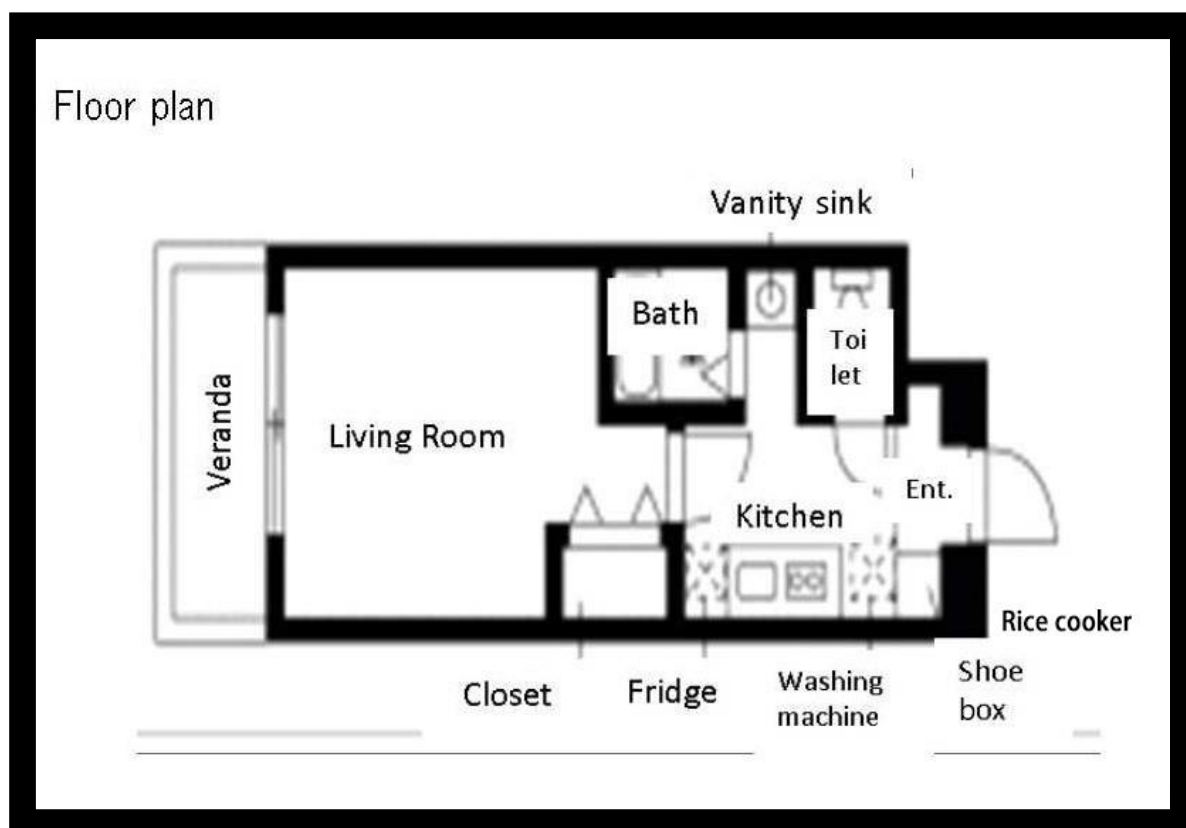
5 minutes on foot from Nakakoen station of the Port-Liner; 2 minutes on foot to Kobe Gakuin University

### <Facilities>

Your accommodation is a single occupancy studio flat contains a kitchen, a living room equipped a dining table, 2 chairs and a single bed. As to other facilities equipped in your accommodation, please refer to the floor plan and the list below.

### <Costs>

The monthly fee is 35,410 yen, which doesn't include the electricity fee. Also the students are required to prepare bedding set at their own expense.





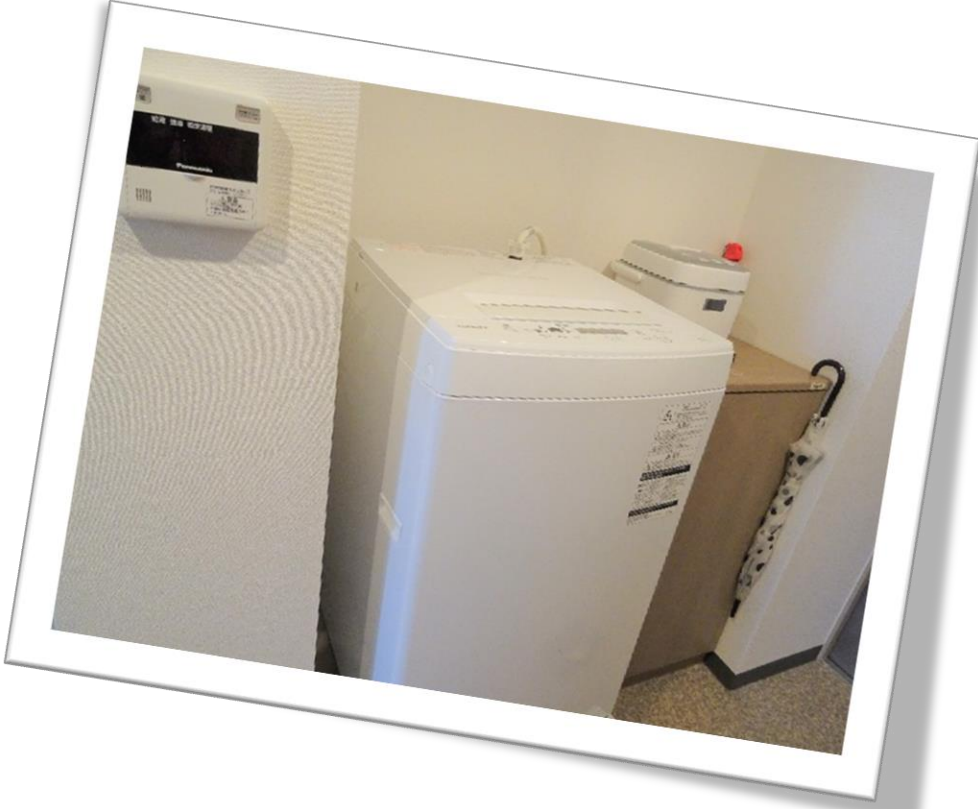
Singled bed  
Dining table and 2 chairs

Small chest





Refrigerator  
Microwave  
Electric kettle



Rice cooker  
Washing machine  
Shoe box

Free Wi-Fi