

Accommodation Details

< Location & transportation >

5 minutes on foot from Nakakoen station of the Port-Liner; 2 minutes on foot to Kobe Gakuin University

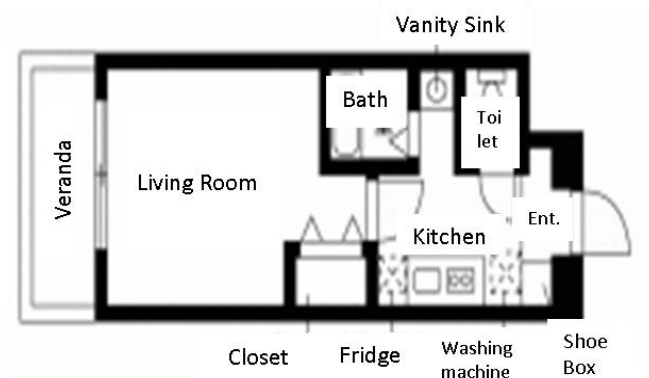
< Facilities >

Your accommodation is a single occupancy studio flat contains a kitchen, a living room equipped a dining table, 2 chairs and a single bed. As to other facilities equipped in your accommodation, please refer to the floor plan and the list below.

< Costs >

The monthly fee is 33,000 yen, which doesn't include the charges of electricity and water supply. Also the students are required to prepare bedding set at their own expense.

Floor plan



List of other equipments

- Washing machine
- Refrigerator
- Microwave
- Electric kettle
- Single bed
- Shoe Box
- Dining Table and 2 chairs
- Small chest
- Air conditioning
- Free internet access
(Not free Wi-Fi)