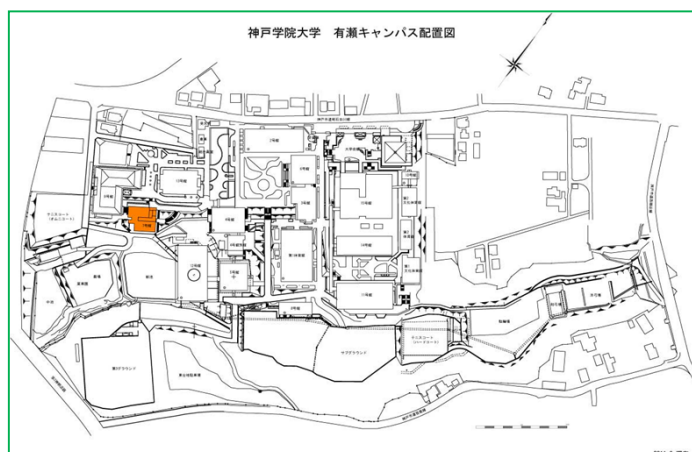


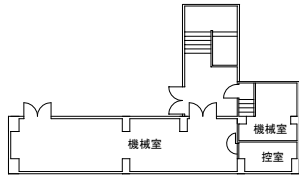
7号館建物情報



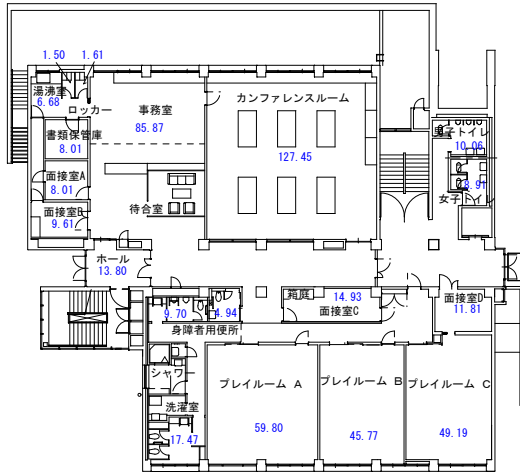
竣工年度	1981年9月18日
構造	鉄骨鉄筋コンクリート造陸屋根8階建
建築面積	757.95 m ²
延床面積	4,694.22 m ²

7号館平面図 (1階~7階)

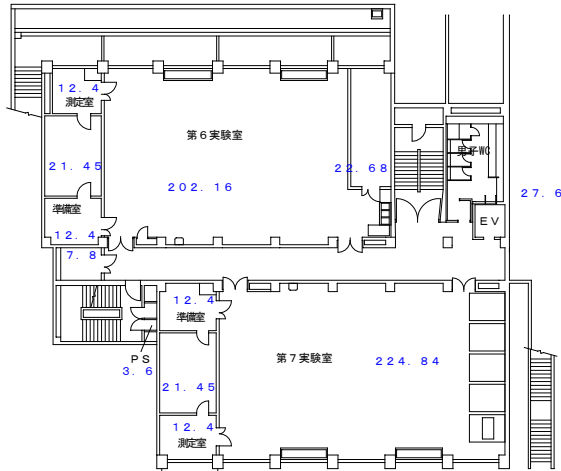
8階 (110.19㎡)



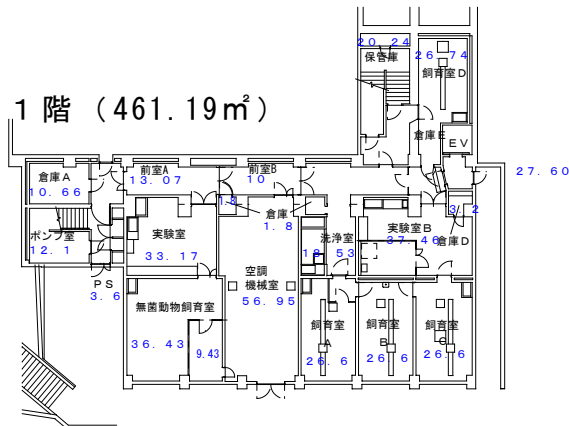
3階 (691.27㎡)



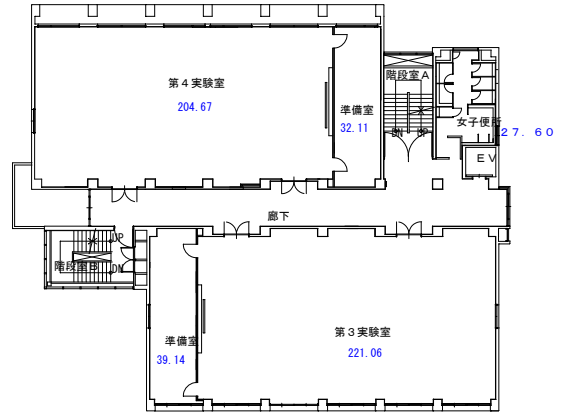
2階 (698.92㎡)



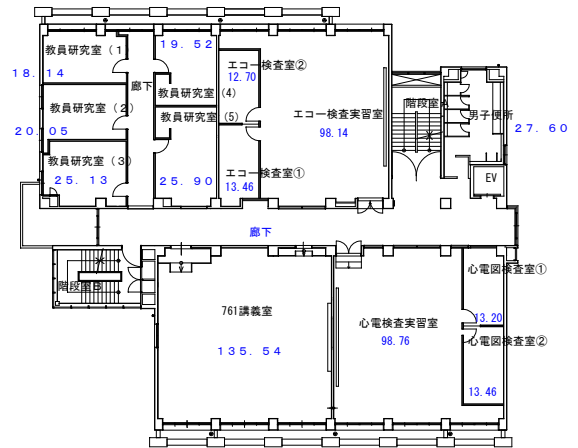
1階 (461.19㎡)



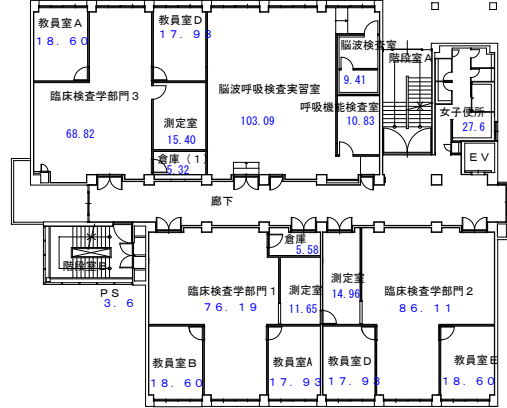
7階 (665.86㎡) 1 : 500



6階 (688.93㎡)



5階 (688.93㎡)



4階 (688.93㎡)

