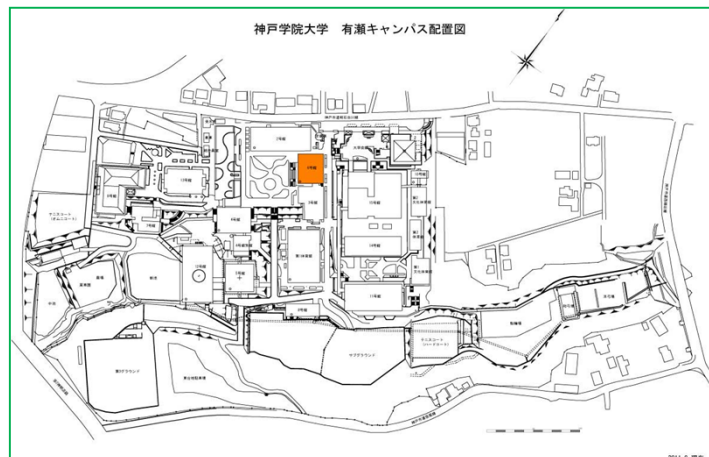


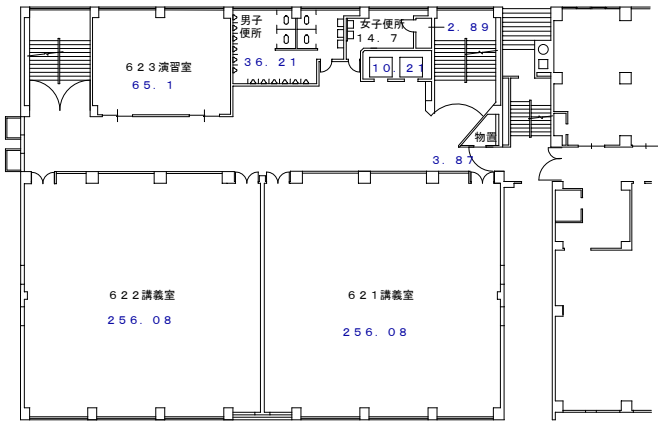
## 6号館建物情報



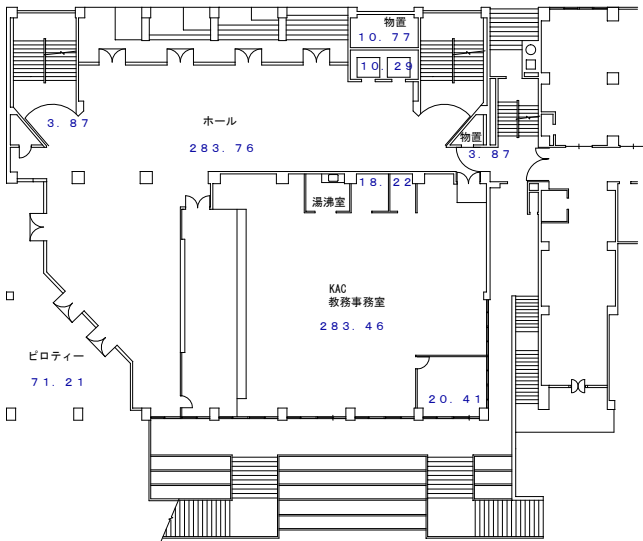
竣工年度	1978年3月31日
構造	鉄骨鉄筋コンクリート造陸屋根地下1階付7階建
建築面積	868.30 m <sup>2</sup>
延床面積	4,733.66 m <sup>2</sup>

# 6号館 (地階 ~ 6階)

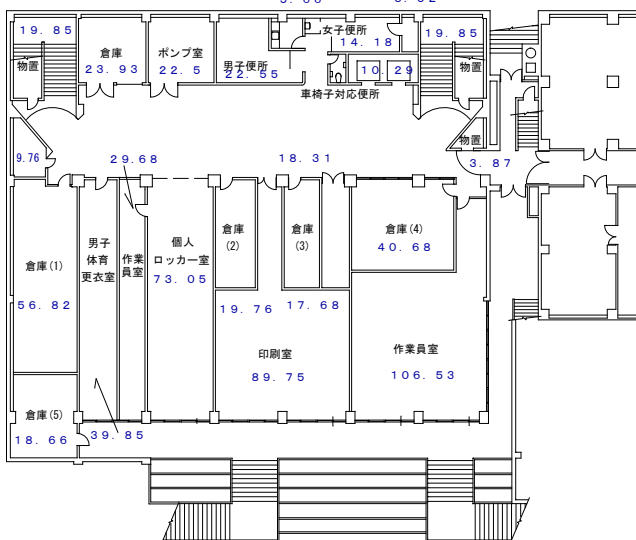
2階 (868.29m<sup>2</sup>)



1階 (705.82m<sup>2</sup>)

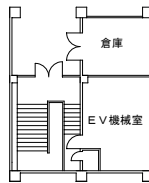


地階 (868.29m<sup>2</sup>)

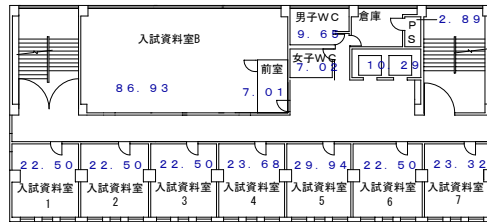


7階 (78.32m<sup>2</sup>)

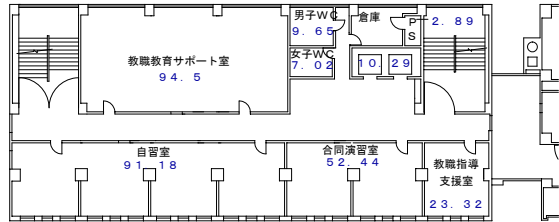
1 : 500



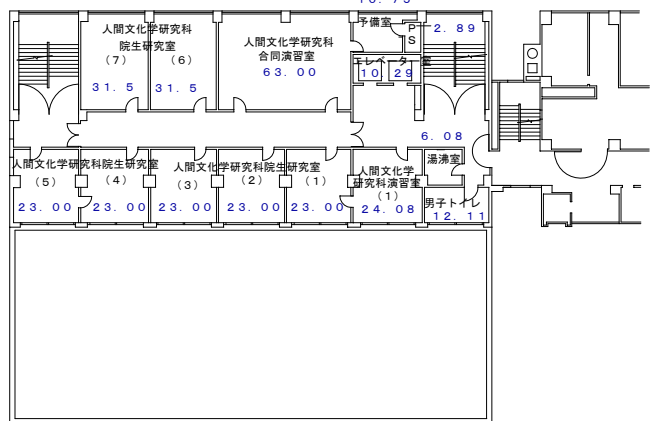
6階 (447.58m<sup>2</sup>)



5階 (447.58m<sup>2</sup>)



4階 (449.49m<sup>2</sup>)



3階 (868.29m<sup>2</sup>)

