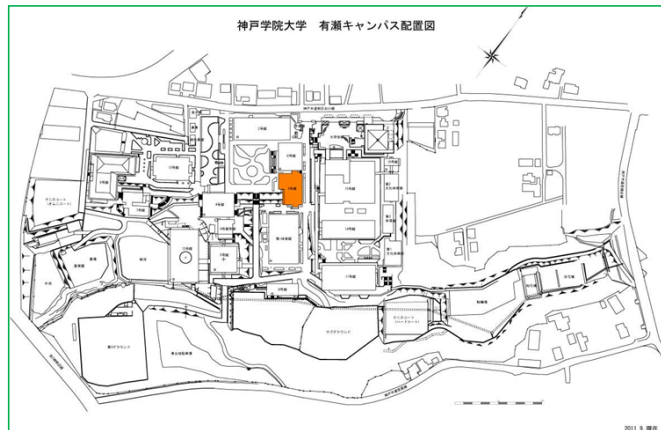


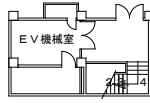
3号館建物情報



竣工年度	1969年5月31日
構造	鉄筋コンクリート造陸屋根地下1階付7階建
建築面積	869.92 m ²
延床面積	4,728.50 m ²

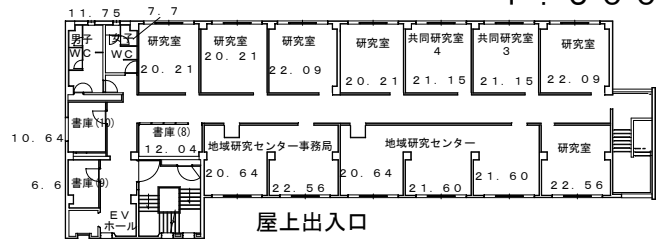
3号館平面図 (地階～6階)

7階 (45.00㎡)



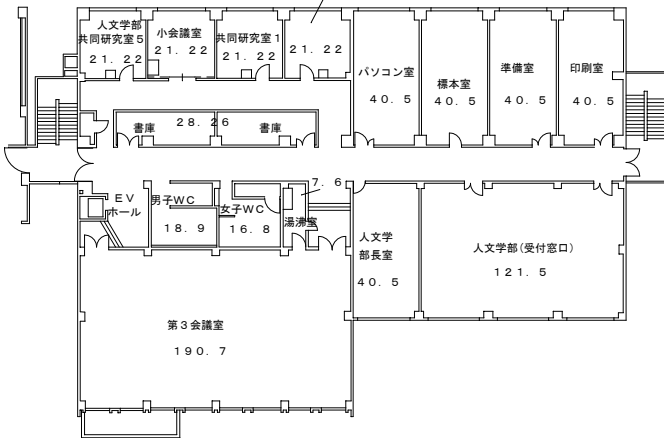
6階 (436.50㎡)

1 : 500

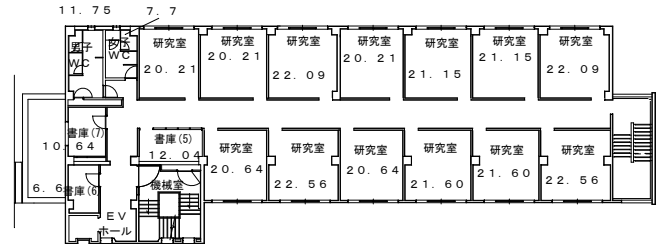


2階 (865.60㎡)

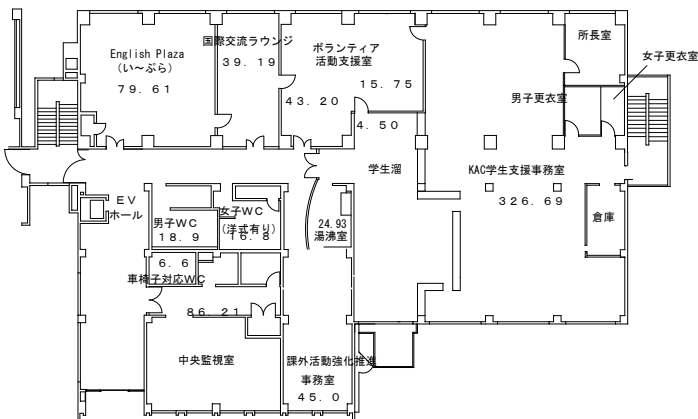
5.5教育プログラム推進室



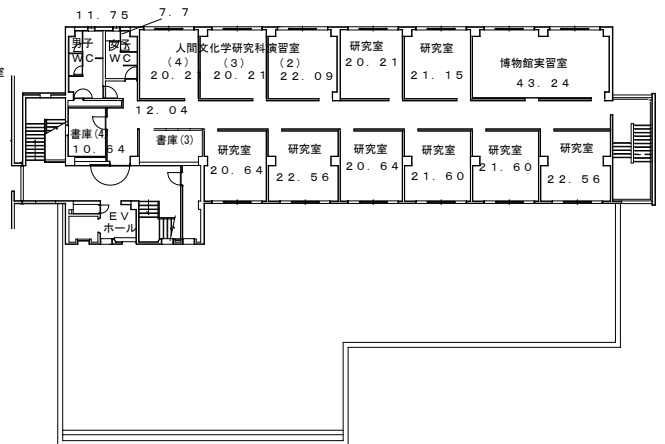
5階 (436.50㎡)



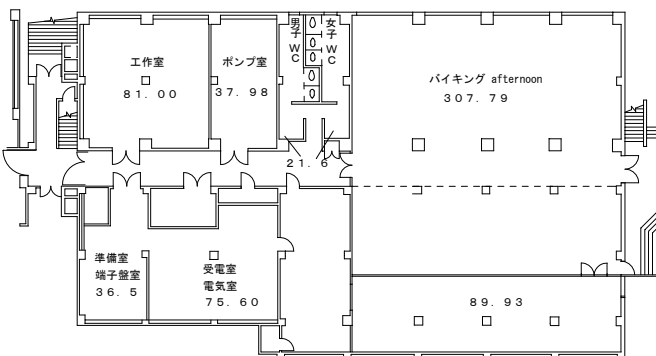
1階 (865.60㎡)



4階 (456.10㎡)



地階 (757.60㎡)



3階 (865.60㎡)

